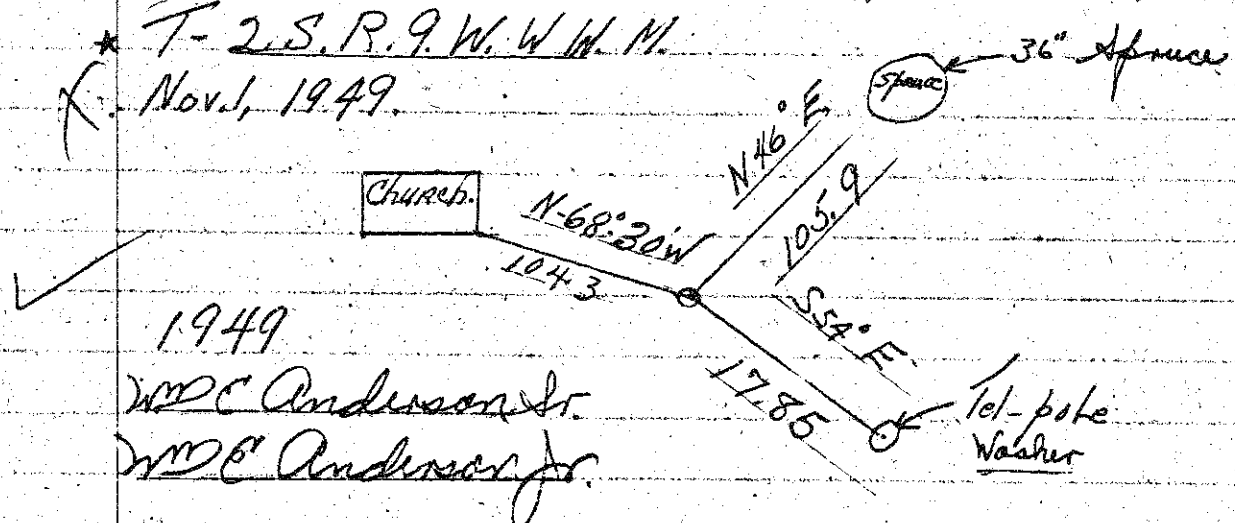


Rewitness Sec Cor. ^{SW} 28-^{SE} 29-^{NE} 32-^{NW} 33.

* T-2.S.R. 9. W.W.M.

Nov. 1, 1949.



1949

Wm C Anderson Sr.

Wm C Anderson Jr.

* Sec ^{SE} 30-^{SW} 31-^{NW} 28-^{NE} 29.

* T. 2.S. R. 9. W.W.M.

20" Spruce

24" spruce

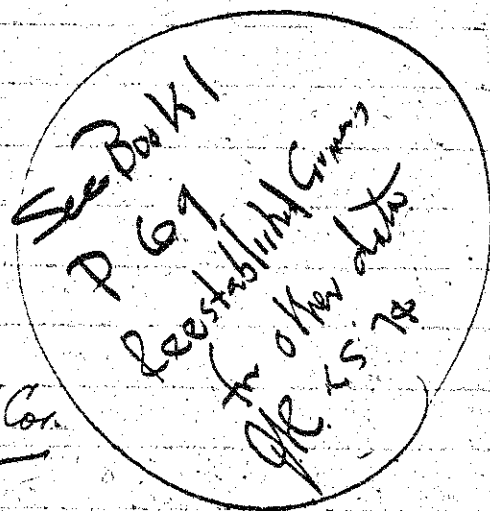
Sec Cor.

Highway

Nov. 1, 1949.

Wm C Anderson Sr.

Wm C Anderson Jr.



* M.C. Between Sec 7 & 17

T. 2.S. R. 10. W.W.M.

60" Spruce S-17°-00'W - 16.5' old B.T.

30" Spruce S-30°-00'W - 130.2' New B.T.

Nov 16, 1949

Wm C Anderson Sr.

Wm C Anderson Jr.

Set 2" I.P. for

1/4 Cor from which a 20" Cedar Bears
1/6 N 71° W 26.3, 14" pine Bears N 33° W 28.3

Nov 28-1949

Wm C Anderson Sr.

S.E. Cor of Sect Lot 4

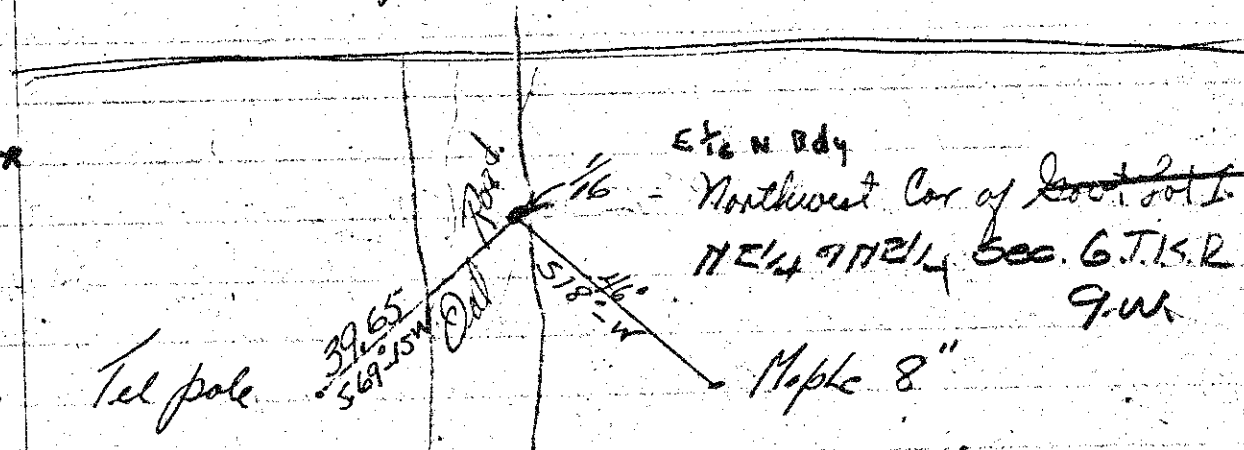
Wm C Anderson Jr.

Sec 12 - T. 1.S. R. 10. W.

* T. 1.S. R. 8. W.

1/4 Cor in E Sec 10

Set 1 1/2 - 1 pipe 20' North of Edge of River
at low water on North Bank from which a
20" Twin spruce Bears N 54° E - 48.5



T. 1.S. R. 9. W.

Sec. 6

In the presence of

Wm C Anderson Sr.

1949, Dec

Wm C Anderson Jr.

* 1/4 Cor. on Netarts Road. Sec. 34-35

T. 1.S. R. 10. W.W.M.

5" I. pipe Made two New trees.

36" Hemlock bears S 10° 30' W = 69.50

20" Hemlock bears N 81° 15' W = 88.10

Note B.T. set by Anderson & Gulstrom

Destroyed by cutting down + Blown over. Dec 27-1949

Wm C Anderson Sr.

Wm C Anderson Jr.